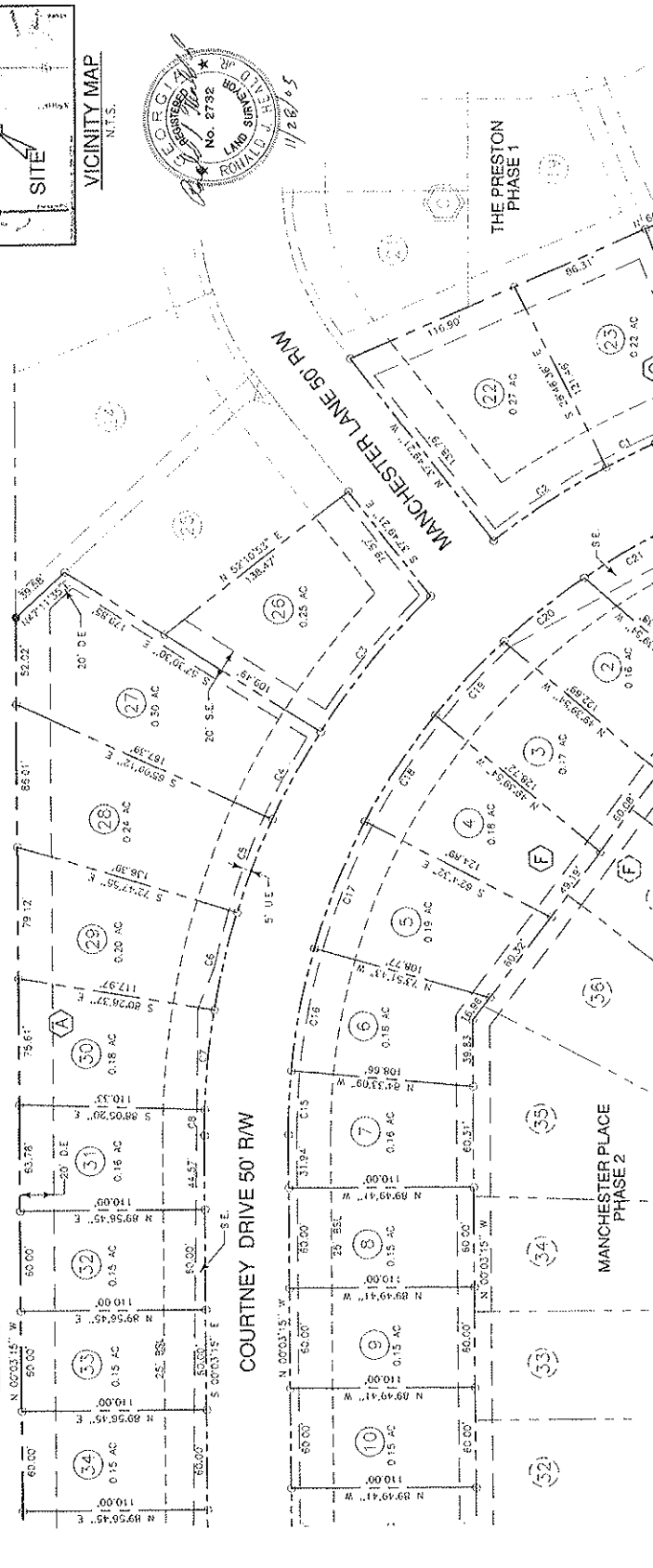


THELMA W. PEAVY & CYNTHIA P. RHODES



LOT	BEARING	CURVE DATA	AREA
1	S 89.56° 45' E	110.00'	0.15 AC
2	N 89.56° 45' E	110.00'	0.15 AC
3	S 89.56° 45' E	110.00'	0.15 AC
4	N 89.56° 45' E	110.00'	0.15 AC
5	S 89.56° 45' E	110.00'	0.15 AC
6	N 89.56° 45' E	110.00'	0.15 AC
7	S 89.56° 45' E	110.00'	0.15 AC
8	N 89.56° 45' E	110.00'	0.15 AC
9	S 89.56° 45' E	110.00'	0.15 AC
10	N 89.56° 45' E	110.00'	0.15 AC
11	S 89.56° 45' E	110.00'	0.15 AC
12	N 89.56° 45' E	110.00'	0.15 AC
13	S 89.56° 45' E	110.00'	0.15 AC
14	N 89.56° 45' E	110.00'	0.15 AC
15	S 89.56° 45' E	110.00'	0.15 AC
16	N 89.56° 45' E	110.00'	0.15 AC
17	S 89.56° 45' E	110.00'	0.15 AC
18	N 89.56° 45' E	110.00'	0.15 AC
19	S 89.56° 45' E	110.00'	0.15 AC
20	N 89.56° 45' E	110.00'	0.15 AC
21	S 89.56° 45' E	110.00'	0.15 AC
22	N 89.56° 45' E	110.00'	0.15 AC
23	S 89.56° 45' E	110.00'	0.15 AC
24	N 89.56° 45' E	110.00'	0.15 AC
25	S 89.56° 45' E	110.00'	0.15 AC
26	N 89.56° 45' E	110.00'	0.15 AC
27	S 89.56° 45' E	110.00'	0.15 AC
28	N 89.56° 45' E	110.00'	0.15 AC
29	S 89.56° 45' E	110.00'	0.15 AC
30	N 89.56° 45' E	110.00'	0.15 AC
31	S 89.56° 45' E	110.00'	0.15 AC
32	N 89.56° 45' E	110.00'	0.15 AC
33	S 89.56° 45' E	110.00'	0.15 AC
34	N 89.56° 45' E	110.00'	0.15 AC
35	S 89.56° 45' E	110.00'	0.15 AC
36	N 89.56° 45' E	110.00'	0.15 AC
37	S 89.56° 45' E	110.00'	0.15 AC
38	N 89.56° 45' E	110.00'	0.15 AC
39	S 89.56° 45' E	110.00'	0.15 AC
40	N 89.56° 45' E	110.00'	0.15 AC
41	S 89.56° 45' E	110.00'	0.15 AC
42	N 89.56° 45' E	110.00'	0.15 AC

**SURVEYOR'S CERTIFICATION**  
THE FIELD DATA UPON WHICH THIS MAP OF PLAT IS BASED HAS A CLOSURE PRECISION OF ONE FOOT PER HUNDRED FEET AND WAS OBTAINED USING THE LEAST SQUARES METHOD AND WAS ADJUSTED USING THE LEAST SQUARES METHOD.  
THIS MAP OR PLAT HAS BEEN CALCULATED FOR CLOSURE AND IS TO BE ACCURATE WITHIN ONE FOOT IN 10,000 FEET TO BE ACCURATE WITHIN THE LINEAR AND ANGULAR MEASUREMENTS SHOWN ON THIS PLAT WERE OBTAINED BY USING A TOPCON 8000 TOTAL STATION ON 3/17/06.

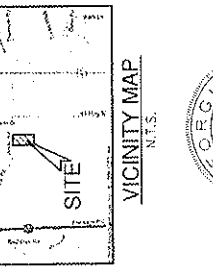
**OWNER'S CERTIFICATION**  
I, THE OWNER, HEREBY CERTIFY THAT I AM THE OWNER OF THE LAND SHOWN ON THIS PLAT AND ACKNOWLEDGE THE PLAT AND ALLOTMENT TO BE AS FOLLOWS: ALL AREAS SHOWN OR INDICATED ON THE PLAT AS STREETS, ALLEYS, EASEMENTS, OR PARCELS.

**CITY ENGINEER CERTIFICATION**  
I, THE CITY ENGINEER, HEREBY CERTIFY THAT I HAVE EXAMINED THE PLAT AND FOUND IT TO BE IN ACCORDANCE WITH THE REGULATIONS OF THE CITY OF BRON, GEORGIA, AND THE REGULATIONS OF THE BRON PLANNING AND ZONING COMMISSION.  
DATE: 3/23/06  
BY: [Signature]

**BYRON PLANNING & ZONING COMMISSION**  
I, THE COMMISSIONER, HEREBY CERTIFY THAT I HAVE EXAMINED THE PLAT AND FOUND IT TO BE IN ACCORDANCE WITH THE REGULATIONS OF THE BRON PLANNING AND ZONING COMMISSION.  
DATE: 3/23/06  
BY: [Signature]

**OWNER/DEVELOPER**  
PRESTON DEVELOPMENT, LLC  
500 CORPORATE POINTE  
WASNER ROBINS, GA 31088

**FLOOD PLAN CERTIFICATION**  
I, THE DEVELOPER, HEREBY CERTIFY THAT I HAVE EXAMINED THE FEMA MAP NO. 13030-D-0101E AND THE FLOOD ZONE IS NOT LOCATED IN A FEMA DESIGNATED FLOOD PLAIN.  
DATE: 1/12/05  
BY: [Signature]



**ADAMS & HEADLAND**  
LAND PLANNERS • DEVELOPERS • MANAGERS • SURVEYORS  
1900 WASHINGTON AVENUE, SUITE 102  
PHON: (770) 431-8989  
FAX: (770) 431-8009  
MAON, GEORGIA 31201

**THE PRESTON SUBDIVISION SURVEY FOR PHASE 2**  
PRESTON DEVELOPMENT, LLC

**REVISIONS**  
NO. DATE DESCRIPTION

DATE: NOVEMBER 28, 2005  
SCALE: 1" = 50'  
DESIGNED: [Signature]  
DRAWN: [Signature]  
CHECKED: [Signature]  
PROJECT NO.: 1007

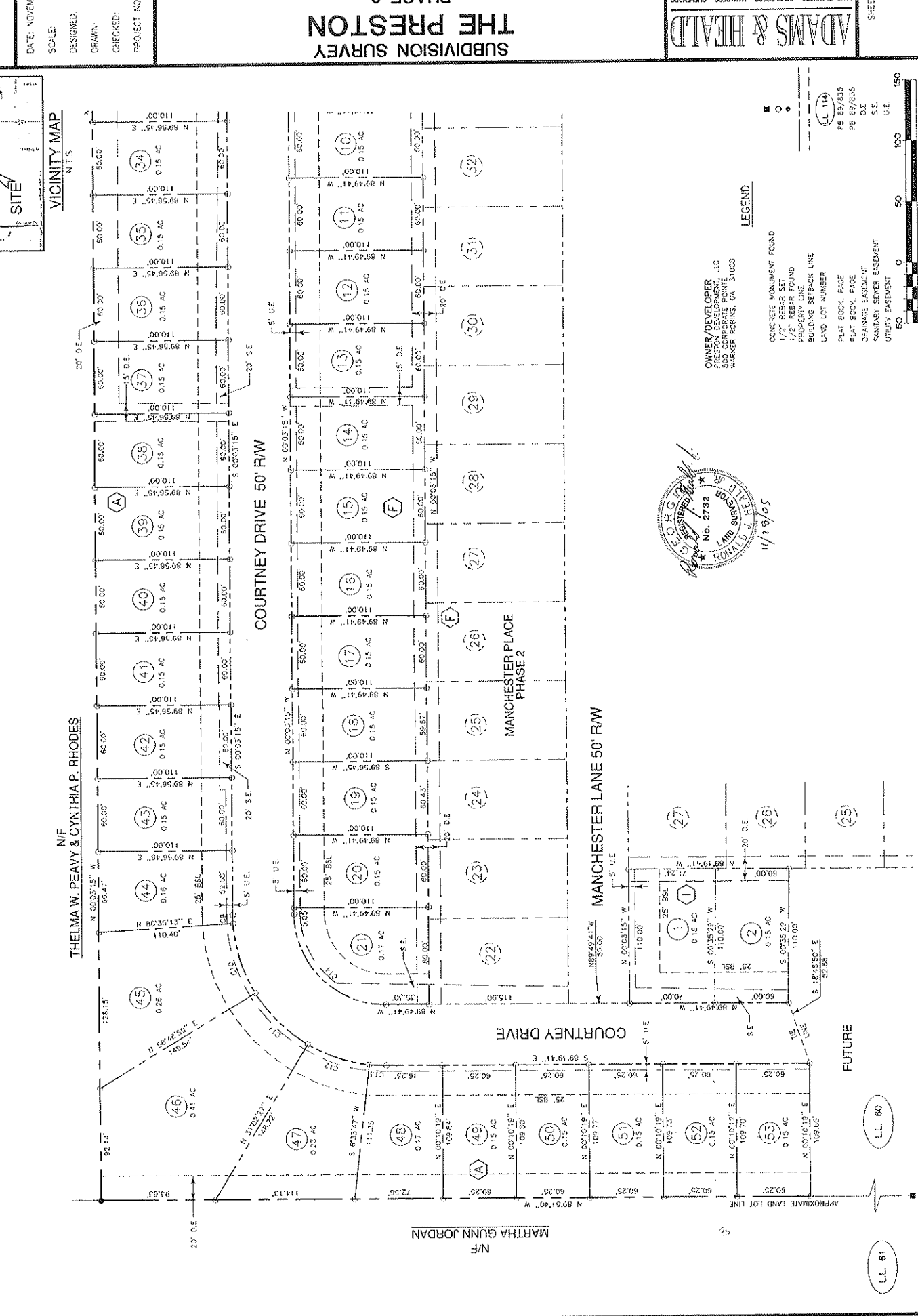
**LEGEND**  
CONCRETE MONUMENT FOUND  
1/2" REBAR SET  
1/2" REBAR FOUND  
BUILDING SETBACK LINE  
LAND LOT NUMBER  
PLAT BOOK, PAGE  
PLAT BOOK, PAGE  
SPRINKLER EASEMENT  
DRAINAGE EASEMENT  
UTILITY EASEMENT

**NOTES:**  
1. LOT SUMMARIES: 6 LOTS  
BLOCK C - 4 LOTS  
BLOCK D - 21 LOTS  
BLOCK E - 2 LOTS  
BLOCK F - 15 LOTS  
2. TOTAL AREA = 12.04 AC.  
3. 25' RADIUS RIGHT-OF-WAY ARE 50'  
4. ALL EASEMENTS ARE FOR APPROPRIATE UTILITIES  
5. ALL EASEMENTS ARE FOR APPROPRIATE UTILITIES  
6. SETBACKS:  
FRONT: 25'  
SIDE: 6'  
7. 5' UTILITY EASEMENT ALONG FRONT OF ALL LOTS.  
8. THE PROPERTY IS ZONED R3  
9. SUBJECT PROPERTY IS LOCATED ON  
10. THIS AND SURROUNDING PROPERTY IS SHOWN AS AFFECTED BY THIS PROPERTY ARE SHOWN

**BOOK 25**  
**Page 107-108**



THELMA W. PEAVY & CYNTHIA P. RHODES  
N/F



NO. 83 WEST ZONE

REVISIONS  
NO. DATE DESCRIPTION

DATE: NOVEMBER 28, 2000  
SCALE: 1" = 50'  
DESIGNED:  
DRAWN:  
CHECKED:  
PROJECT NO. 1501

SUBDIVISION SURVEY  
THE PRESTON  
FOR  
PHASE 2

ADAMS & HEADLD  
LAND PLANNERS - DEVELOPERS - SURVEYORS

1090 WASHINGTON AVENUE, SUITE 102  
Macon, Georgia 31201  
(478) 245-6039

SHEET NUMBER:  
2  
OF 2